

01843 230 960

[www.lovetts.net](http://www.lovetts.net)

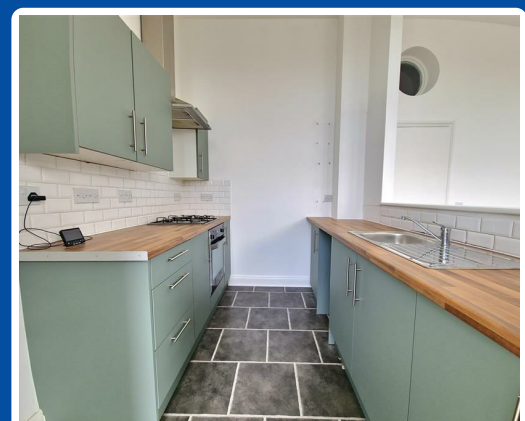


## Grosvenor Place, Margate, CT9 1UY

**£975 PCM**

Lovetts Property Services are proud to bring to the market this spacious two Bedroom flat situated near to Dreamland and Margate sea front. Set in a period property this first floor flat is accessed via communal entry hall. The flat comprises of: Open plan Lounge/Kitchen with bay window to front. Kitchen has various units with integrated oven/hob. Leading from Hall there is a Bathroom with three piece suite, shower overhead, incorporating a cupboard with plumbing for washing machine. You will find the two double Bedrooms to the rear.

To arrange a viewing please call us on 01843 230960



# Grosvenor Place, Margate, CT9 1UY

- Lounge 12'1" x 13'9" (3.7 x 4.2)
- Kitchen 6'10" x 8'6" (2.1 x 2.6)
- Bathroom 5'2" x 9'2" (1.6 x 2.8)
- Bedroom 1 7'10" x 10'2" (2.4 x 3.1)
- Bedroom 2 9'10" x 11'5" (3 x 3.5)

